



## The Croft, Bury St. Edmunds, IP31 1AN

Rent - £1,975 PCM      Deposit - £2,278

Situated within the desirable Suffolk village of Bardwell, this detached bungalow presents spacious and adaptable accommodation. The property enjoys a particularly attractive position overlooking a large, quiet green with mature trees, creating a safe and open environment ideal for families, with no through road adding to the sense of privacy.

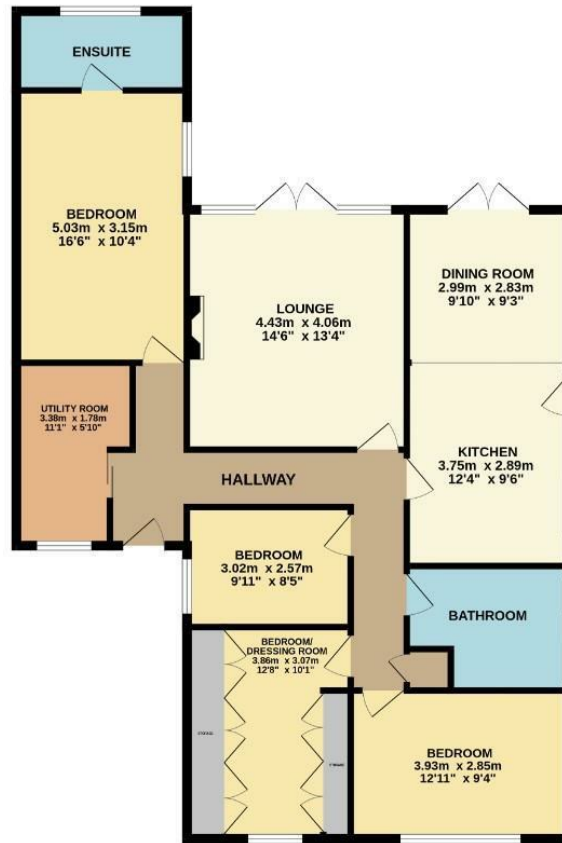
The property has been enhanced in recent years, most notably with the conversion of the garage, now providing an additional bedroom complete with a modern en-suite, as well as a separate utility area for added practicality.

- UNIQUE VILLAGE LOCATION
- GARAGE CONVERTED PRINCIPAL SUITE
- WELL THOUGHT OUT MODERN KITCHEN/DINER
- ENCLOSED, PRIVATE GARDEN
- COUNCIL TAX BAND - C
- FOUR BEDROOM DETACHED LAYOUT
- EN-SUITE WITH UNDERFLOOR HEATING
- SEPARATE UTILITY ROOM
- EPC RATING - D
- OFF ROAD PARKING FOR MULTIPLE VEHICLES



Council Tax Band: C - EPC Rating: D 68

GROUND FLOOR  
112.6 sq.m. (1212 sq.ft.) approx.



TOTAL FLOOR AREA: 112.6 sq.m. (1212 sq.ft.) approx.

Whilst every attempt has been made to ensure the accuracy of the floorplan contained herein, measurements of doors, windows, rooms and any other items are approximate and no responsibility is taken for any error, omission or mis-statement. This plan is for illustrative purposes only and should be used as such by any prospective purchaser. The services, systems and appliances shown have not been tested and no guarantee as to their operability or efficiency can be given.  
Made with Meeqoo.co.uk

